

# 10Gbps WebSmart Multi Gigabit Switch

## 12-Port Multi Giga incl 4x 10G RJ45, 8x10G SFP+

WEB-10TX408

airlive®



100M/1G/2.5G/5G/10G RJ-45

Web Managed

QoS

Multi-Gigabit Auto-negotiation

Works with Cat6e/6a or up cables

1G/2.5G/10G SFP+

Bandwidth Control

VLAN

Loop Protection

Surge/ESD protection

## Overview

### Painless Upgrading your Network Connection to 10G Super High speed Web Management Switch

The AirLive Multi-Giga switch, WEB-10TX408, is a Web Managed switch, which supports 4 RJ45 ports and 8 SFP+ ports for delivering up to 10Gbps extra high-speed connection. Each port can auto-adaptively deliver speed at 100M/1G/2.5G/5G/10G on RJ45 and 1G/2.5G/10G on SFP+ to connect to devices. Supports WEB Management function and is easy to manage and maintain. The easy to operate WEB-10TX408 has several functions like VLAN setting for a more secure connection. QoS to have more control of the bandwidth and many more like, IGMP, Loop Prevention, Port-Base Mirroring, Port Isolation, Bandwidth Control, Security (MAC Address /table /search / static MAC; Storm control and more. With the 10G multi-Giga switch, you can connect to a variety of 10GbE-enabled devices, such as NAS | NVR | PC | Server, for enjoying faster experience and handle bandwidth-hungry applications. Designed in a slim sized solid housing, it's an affordable, space-saving solution suitable to Home and SMB network applications.

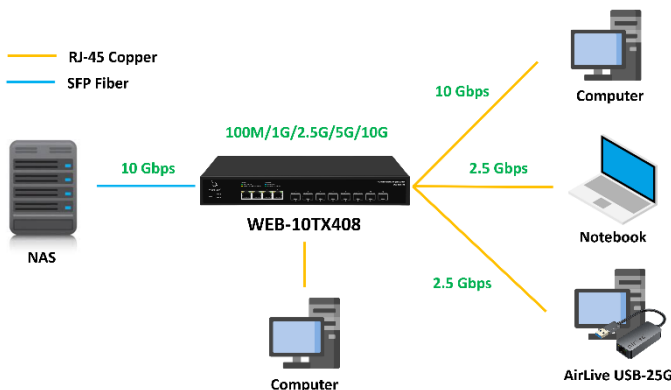


100M/1G/2.5G/5G/10G RJ-45 Port

1G/2.5G/10G SFP+ Port

## Features and Specifications

- 4 x 100M/1G/2.5G/5G/10G RJ45
- 8 x 1G/2.5G/10G SFP+
- Web Smart Management
- QoS; Priority management
- VLAN: enhanced security and performance
- Loopback Detection
- All ports at Multi Gigabit high speed, auto-negotiation
- Providing satisfied bandwidth for various network devices, such as online gaming, multi-media, NAS, Server system
- Super Fast 10Gbps RJ-45 and SFP+
- Existing Cat5e cable suitable (Cat6a needed for 10G), painless upgrading
- Compact size for Home or SMB Network Connectivity



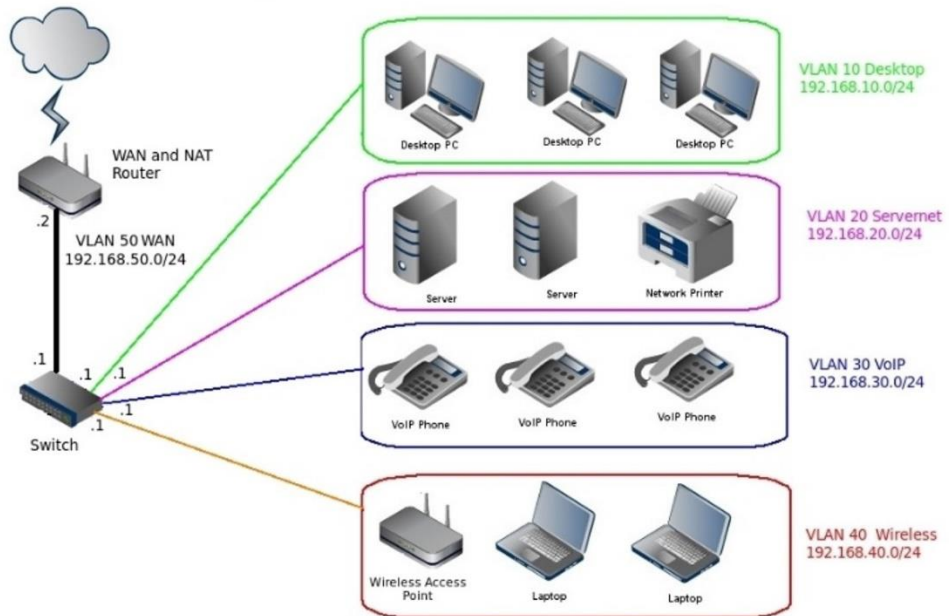
Built for High-Speed connectivity

### 1G/2.5G/5G/10G RJ-45 and SFP+ Multi Gigabit perfect for various applications

With the AirLive 10G Multi-Giga switch WEB-10TX408, you can connect to a variety of 10GbE-enabled devices, such as NAS | NVR | PC | Server, the RJ45 and SFP+ ports are auto adaptive and can also work at multiple speeds for enjoying faster experience and handle bandwidth-hungry applications.

### VLAN for enhanced network security

The VLAN 802.1Q VLAN tagging settings can be used to separate traffic within a business such as isolating resources between network administrators and general users or between employees and public guest users. With the help of VLAN interface, switches can communicate with other network layer devices.

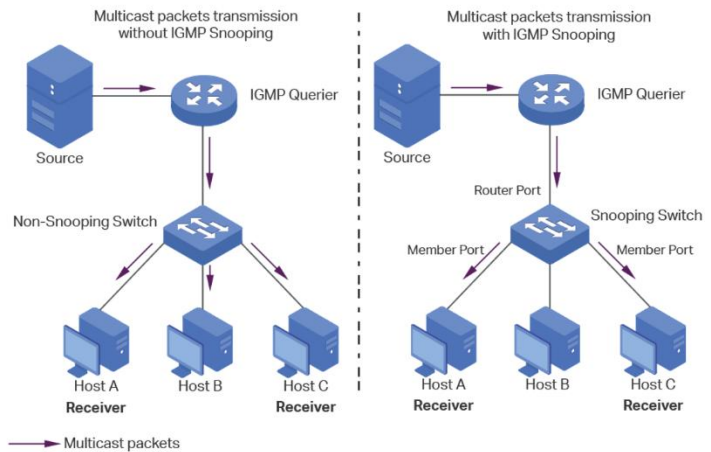


### QoS for enhanced traffic control

QoS (Quality of service) is the ability to provide different priority to different applications, users, or video/voice/data flows, or to guarantee a stable level of performance to each data flow. This can be with Port-based Priority or Priority to queue.

### IGMP Snooping Multicast

Multicast protocols is compliant with IGMP v1/v2/v3 and supports abundant multicast features such as IGMP v2/v3 snooping and fast leave. By analyzing the IGMP messages received, L2 devices establish a mapping between ports and MAC multicast addresses and forward the multicast data accordingly.



### High Video Streaming

Moreover, higher bandwidth improves the playback quality of 4K/8K videos, prevents lag for Gaming, smooths speed when download or upload large data, increases data transfer speed when doing backup to a NAS drive.



Model	AirLive WEB-10TX408
<p><b>Hardware</b></p> <ul style="list-style-type: none"> <li>• <b>Device Interface:</b> 4 x 100M/1G/2.5G/5G/10G RJ45 8 x 1G/2.5G/10G SFP+ 12-port totally Auto MDI/MDIX</li> <li>• <b>Standard</b> IEEE802.3u 100Base-TX IEEE802.3ab Gigabit 1000Base-T IEEE802.3bz 2.5GBase-T IEEE 802.3an 10G Ethernet IEEE 802.3z 1000BASE-X Gigabit Ethernet (optical fiber) IEEE 802.3ae 10G Ethernet (optical fiber) IEEE802.3x Flow Control and Back Pressure IEEE 802.3ad port trunk with LACP IEEE 802.1D Spanning Tree Protocol IEEE 802.1w Rapid Spanning Tree Protocol IEEE 802.1p Class of Service IEEE 802.1Q VLAN tagging</li> <li>• <b>Lightning Surge / ESD Protection:</b> Support Port Surge: Common Mode 4KV, Differential Mode 2KV. (Class A), Electrostatic ESD: Contact 6KV, Air 8KV. (Class A)</li> <li>• <b>LED Indicators:</b> PWR (power supply), SYS (System), Port 1~4: Green LED ON: 10G Link normal, Yellow LED ON: 100M/1G/2.5G/5G Link normal, Port 5~12: Blue LED ON: 10G Link normal, Green LED ON: 1.25G/2.5G Link normal</li> <li>• <b>Mechanical</b> Solid Metal Housing, Desktop</li> </ul> <p><b>Switch Architecture   Performance</b></p> <ul style="list-style-type: none"> <li>• <b>Switching architecture: Store and Forward</b> Switch Capacity: Back-plan up to 240Gbps Packet Forwarding Rate; 178.56Mpps Packet Buffer: 16Mbit MAC Address: 32K VLAN: VLAN range 1-4094, with a maximum active VLAN of 4K Jumbo Frame: 10K Transfer mode: Store and Forward MTBF:100000 hour</li> </ul> <p><b>Web Management Software Function L2</b></p> <ul style="list-style-type: none"> <li>• <b>Port Setting:</b> Port Switch Configuration, Port Description Configuration, Port Speed Configuration, Port Duplex Configuration, Port Flow Control Configuration, Jumbo Frame, EEE</li> <li>• <b>Link Aggregation:</b> Support load balance policy; based on MAC and IP-MAC, Static and Dynamic Group, Support LACP Up to 8 groups</li> <li>• <b>Storm Control:</b> Broadcast Suppression, Unknown Multicast, Unknown Unicast</li> </ul>	<ul style="list-style-type: none"> <li>• <b>Port Mirroring:</b> One to one monitor, Many to one monitor, Ingress/Egress/Both, Up to 4 session groups</li> <li>• <b>Port Security:</b> MAC Address Constraints, Protect/Restrict/Shutdown</li> <li>• <b>Port Isolation:</b> Supported</li> <li>• <b>Port Rate-limit:</b> Supported</li> <li>• <b>VLAN:</b> Access/Trunk/Hybrid, VLAN Tunnel (Q-in-Q Tunnel), VLAN range 1-4094, maximum active VLAN is 4K</li> <li>• <b>MAC Address:</b> Filtering MAC Address, Static MAC address</li> <li>• <b>LLDP:</b> Support: LLDP, LLDP MED</li> <li>• <b>Spanning Tree Protocol:</b> STP/RSTP, BPDU Filter, BPDU Guard, Edge Port</li> <li>• <b>Multicast:</b> IGMP Snooping, Router Port, Static IGMP Join, IGMP V1/V2/V3</li> <li>• <b>QoS:</b> Traffic classification, Supporting SP and WRR scheduling, Port Priority, 802.1P Priority, IP DSCP Priority, Priority Remark, Supports up to 8 queues per port</li> <li>• <b>ERPS:</b> Support Main Ring</li> <li>• <b>Loopback Detection:</b> Supported</li> <li>• <b>Access Protocol:</b> HTTP, Session Timeout</li> <li>• <b>Security:</b> DHCP Snooping</li> <li>• <b>Copper Test:</b> Supported</li> <li>• <b>Ping:</b> Supported</li> </ul> <p><b>Management</b></p> <ul style="list-style-type: none"> <li>• <b>Manager Access:</b> HTTP, SNMP</li> <li>• <b>Manager IP:</b> Static Address, Manager VLAN, DNS, DHCP Client</li> <li>• <b>SNMP:</b> V1/V2C, Community Name, Trap host</li> <li>• <b>SNMP MIB:</b> RFC 1213 MIB-II, RFC 1643 Ethernet MIB, RFC 2863 Interface MIB</li> <li>• <b>User Management</b></li> <li>• <b>Firmware Management:</b> Firmware Upgrade</li> <li>• <b>Configuration Management:</b> Upload/Backup Configuration</li> <li>• <b>Save, Restart</b></li> <li>• <b>Factory Defaults</b></li> </ul>

\* Specification will be changed without prior notice

\* All trademarks, logos and brand names are the property of their respective owners.



Model	AirLive WEB-10TX408
<ul style="list-style-type: none"><li>• <b>Transmission Distance</b> 10Base-T: Cat3,4,5 UTP(≤100 meter) 100Base-TX: Cat5 or later UTP(100 meter) 1000Base-TX: Cat5e or later UTP(100 meter) 2500Base-TX: Cat5e or later UTP(100 meter) 10GBase TX: Cat6a, Cat7 or above UTP/STP (100m)</li><li>• <b>Fiber Medium:</b> 1000BASE-SX: 62.5μm MMF (Multimode optical fiber) (Minimum range: 2m~275m) or 50μm MMF 1000BASE-LX: 62.5μm/50μm MMF (Minimum range: 2m~550m) or 10μm SMF (Minimum range: 2m~5km) 2500BASE-X: G.652D SMF (Single-mode optical fiber) (Minimum range: 2m~500m or 2m~5Km) 10GBASE-SR: OM1/OM2/OM3 or above MMF (Operating range: 2m~300m) 10GBASE-LR: IEC and B1.1 and B1.3 SMF (Minimum range: 2m~10km)</li></ul> <p><b>Power</b></p> <ul style="list-style-type: none"><li>• <b>Power Input:</b> AC 100~240V 50/60Hz (Internal DC 12V/4A)</li><li>• <b>Power Usages Max:</b> 45.83W</li></ul> <p><b>Environment</b></p> <ul style="list-style-type: none"><li>• <b>Operating Temperature:</b> 0°C to +40°C</li><li>• <b>Storage Temperature:</b> -40°C to +70°C</li><li>• <b>Working Humidity:</b> 10%~90%, non-condensing</li><li>• <b>Storage Humidity:</b> 5%~95%, non-condensing</li></ul> <p><b>Standard package of switch</b></p> <ul style="list-style-type: none"><li>• <b>Product size:</b> 32.0 x 20.7 x 4.5 cm(L*W*H)</li><li>• <b>Package size:</b> 37.0 x 29.0 x 8.5 cm(L*W*H)</li><li>• <b>Package Weight:</b> N.W: 1.59kg; G.W: 2.16kg</li><li>• <b>Package content:</b> 1 x Switch, 1 x Power cord, 1 x QIG.</li></ul> <p><b>Standard carton package</b></p> <ul style="list-style-type: none"><li>• <b>Quantity:</b> 5pcs / 1 carton</li><li>• <b>Dimensions</b> 44.5 x 31.0 x 39.0 cm (L*W*H)</li><li>• <b>Weight</b> 11.54kg (G.W)</li></ul> <p><b>Ordering Information</b></p> <ul style="list-style-type: none"><li>• <b>Model:</b> WEB-10TX408</li><li>• <b>Name:</b> 12-port 10Gbps WebSmart Multi Gigabit Switch, incl. 4 x 10G RJ45 and 8x 10G SFP+, Plug and Play, Auto-Negotiation</li></ul>	

\* Specification will be changed without prior notice

\* All trademarks, logos and brand names are the property of their respective owners.

